

1. Unstuff the file double-clicking on it. A folder with the same name will appear on your desktop.

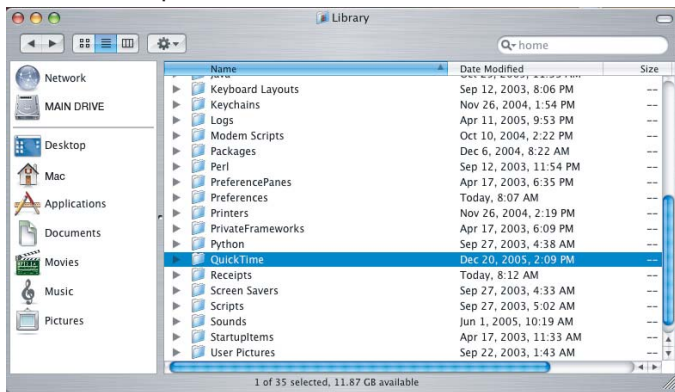
2. Double-click on the unzipped folder to open it (shown below). The folder will contain the driver installer and also a file that will manually need to be placed in the QUICKTIME folder located in the LIBRARY folder of your main drive.



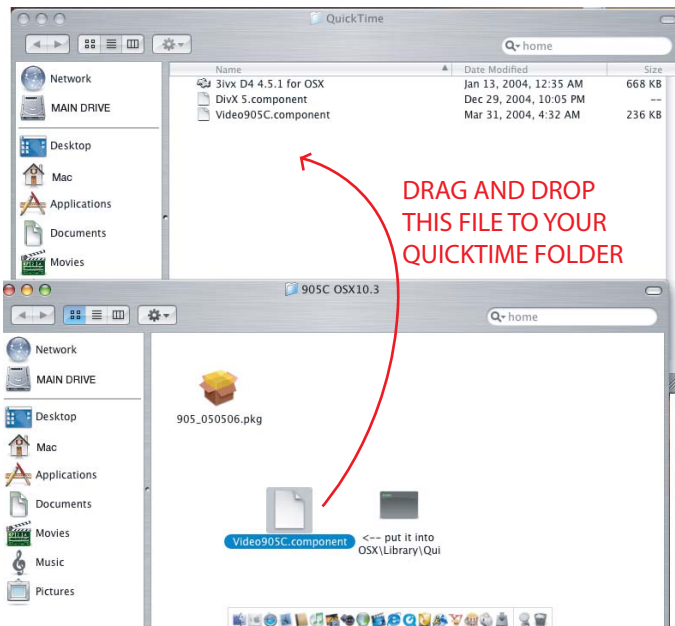
3. Double-click on the Main Drive icon located on your desktop to open a second window on the desktop.

4. Scroll down to the LIBRARY folder and double-click on it to open.

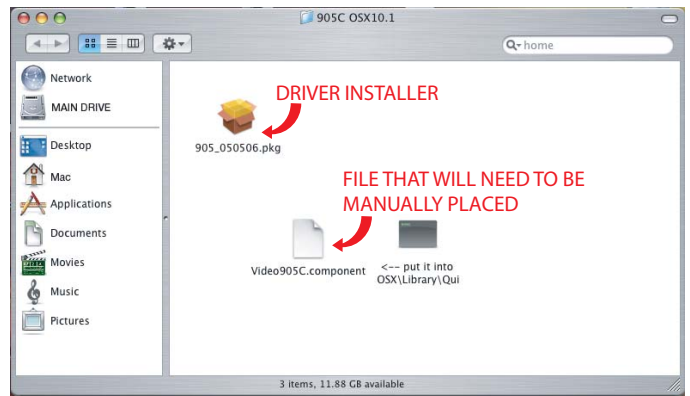
5. Locate the QUICKTIME folder (shown below) and double-click on it to open.



6. With the 2 windows open, drag the file from the unstuffed driver folder to QUICKTIME folder as shown below.



7. Now double-click on the Driver Installer file.



8. A screen like the one shown below will appear. You will need to select your main hard drive before clicking on the Continue button.



9. When the installation is completed you will need to restart your computer. Click the Restart button and your computer will automatically reboot.



INSTALLATION COMPLETED