

JENSEN®

UNIVERSAL DOCKING STATION for iPod®



OWNER'S
MANUAL
JiSS-20

(iPod Not Included)

PLEASE READ THIS OWNER'S MANUAL COMPLETELY BEFORE OPERATING
THIS UNIT AND RETAIN THIS BOOKLET FOR FUTURE REFERENCE.

DEAR JENSEN® CUSTOMER

Selecting fine audio equipment such as the unit you've just purchased is only the start of your musical enjoyment. Now it's time to consider how you can maximize the fun and excitement your equipment offers. This manufacturer and the Electronic Industries Association's Consumer Electronics Group want you to get the most out of your equipment by playing it at a safe level. One that lets the sound come through loud and clear without annoying blaring or distortion and, most importantly, without affecting your sensitive hearing.

Sound can be deceiving. Over time your hearing "comfort level" adapts to higher volumes of sound. So what sounds "normal" can actually be loud and harmful to your hearing. Guard against this by setting your equipment at a safe level BEFORE your hearing adapts.

To establish a safe level:

- Start your volume control at a low setting.
- Slowly increase the sound until you can hear it comfortably and clearly and without distortion.

Once you have established a comfortable sound level:

- Set the dial and leave it there.
- Taking a minute to do this now will help to prevent hearing damage or loss in the future. After all, we want you listening for a lifetime.

We Want You Listening For a Lifetime

Used wisely, your new sound equipment will provide a lifetime of fun and enjoyment. Since hearing damage from loud noise is often undetectable until it is too late, this manufacturer and the Electronic Industries Association's Consumer Electronics Group recommend you avoid prolonged exposure to excessive noise.

Customer's Record:

The serial number of this product is found on the unit. You should note the serial number of this unit in the space provided as a permanent record of your purchase to aid in identification in the event of theft or loss.

Model Number: JISS-20

Serial Number: _____

IMPORTANT SAFETY INSTRUCTIONS

When used in the directed manner, this unit has been designed and manufactured to ensure your personal safety. However, improper use can result in potential electrical shock or fire hazards. Please read all safety and operating instructions carefully before installation and use, and keep these instructions handy for future reference. Take special note of all warnings listed in these instructions and on the unit.

1. Water and Moisture

The unit should not be used near water. For example: near a bathtub, washbowl, kitchen sink, laundry tub, swimming pool or in a set basement.

2. Ventilation

The unit should be situated so that its location or position does not interfere with its proper ventilation. For example, it should not be situated on a bed, sofa, rug or similar surface that may block the ventilation openings. Also, it should not be placed in a built-in installation, such as a bookcase or cabinet, which may impede the flow of air through the ventilation openings.

3. Heat

The unit should be situated away from heat sources such as radiators, heat registers, stoves or other appliances (including amplifiers) that produce heat.

4. Power Source

The unit should be connected to a power supply only of the type described in the operating instructions or as marked on the appliance.

5. Power Cord Protection

Power supply cords should be routed so that they are not likely to be walked on or pinched by items placed upon or against them. It is always best to have a clear area from where the cord exits the unit to where it is plugged into an AC outlet.

6. Cleaning

The unit should be cleaned only as recommended. See the section "Care and Maintenance" of this manual for cleaning instructions.

7. Object and Liquid Entry

Care should be taken so that objects do not fall and liquids are not spilled into any openings or vents located on the product.

8. Attachments

Do not use attachments not recommended by the product manufacturer.

9. Lightning and Power Surge Protection

Unplug the unit from the wall outlet. This will prevent damage to the product due to lightning and power-line surges.

10. Overloading

Do not overload wall outlets, extension cords, or integral convenience receptacles as this can result in a risk of fire or electric shock.

11. Damage Requiring Service

This unit should be serviced by qualified service personnel when:

- A. The power supply cord or plug has been damaged.
- B. Objects have fallen into or liquid has been spilled into the enclosure.
- C. The unit has been exposed to rain.
- D. The unit has been dropped or the enclosure damaged.
- E. The unit exhibits a marked change in performance or does not operate normally.

12. Periods of Nonuse

If the unit is to be left unused for an extended period of time, such as a month or longer, the power cord should be unplugged from the unit to prevent damage or corrosion.

13. Servicing

The user should not attempt to service the unit beyond those methods described in the user's operating instructions. Service methods not covered in the operating instructions should be referred to qualified service personnel.

COMPLIANCE WITH FCC REGULATIONS

This device complies with Part 15 of the FCC Rules. Operation is subject to the following two conditions:

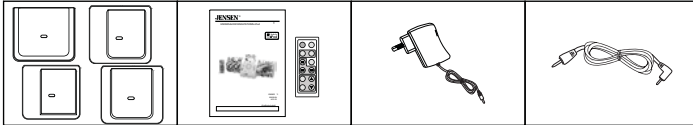
- (1) this device may not cause harmful interference, and
- (2) this device must accept any interference received, including interference that may cause undesired operation.

NOTE : This equipment has been tested and found to comply with the limits for a Class B digital device, pursuant to Part 15 of the FCC Rules. These limits are designed to provide reasonable protection against harmful interference in a residential installation. This equipment generates, uses and can radiate radio frequency energy and, if not installed and used in accordance with the instructions, may cause harmful interference to radio communications. However, there is no guarantee that interference will not occur in a particular installation. If this equipment does cause harmful interference to radio or television reception, which can be determined by turning the equipment off and on, the user is encouraged to try to correct the interference by one or more of the following measures:

- Reorient or relocate the receiving antenna.
- Increase the separation between the equipment and receiver.
- Connect the equipment into an outlet on a circuit different from that to which the receiver is connected.
- Consult the dealer or an experienced radio/TV technician for help.

CAUTION: Changes or modifications not expressly approved by the party responsible for compliance could void the user's authority to operate the equipment.

ACCESSORIES INCLUDED



iPod touch/iPod classic/
iPod/iPod nano/
iPod mini adaptors

Remote control and
Owner's Manual

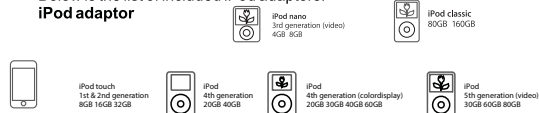
Power adaptor
(Universal
Voltage AC
adaptor)

Line in cable
3.5mm

DOCK ADAPTORS FOR IPOD

Below is the list of included iPod adaptors.

iPod adaptor



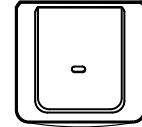
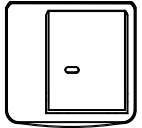
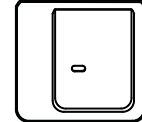
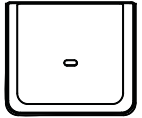
iPod Nano adaptor



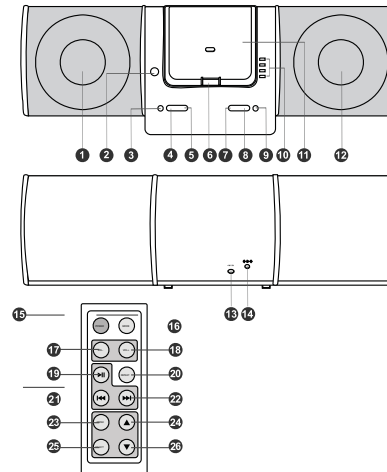
2nd generation iPod Nano adaptor



iPod Mini adaptor




LOCATIONS OF CONTROLS



- | | |
|----|----------------------------|
| 1 | LEFT SPEAKER |
| 2 | REMOTE SENSOR |
| 3 | POWER ON/OFF button |
| 4 | RADIO RESET button |
| 5 | RADIO SCAN button |
| 6 | iPod docking connector |
| 7 | VOLUME DOWN button |
| 8 | VOLUME UP button |
| 9 | MODE Selector |
| 10 | FUNCTION indicators |
| 11 | iPod adaptor |
| 12 | RIGHT SPEAKER |
| 13 | AUX IN jack |
| 14 | DC jack (12V 1.5A -@-) |
| 15 | PLAY/PAUSE button |
| 16 | MODE button |
| 17 | SKIP button |
| 18 | SKIP button |
| 19 | MENU button |
| 20 | UP (anti-clockwise) button |
| 21 | SELECT button |
| 22 | DOWN (clockwise) button |

GETTING STARTED

WARNING: Do not apply power to the unit until all of your connections are made. Please turn off your iPod before docking. Check your iPod manual for the proper procedure to run your model off.

This unit operates using an AC-DC power adaptor (included) with 12V DC / 1.5A output -  + . Before connecting the adaptor, make sure the power ON/OFF switch is set to OFF.

1. Insert the DC plug of the AC-DC power adaptor into the DC 12V jack on the back of the unit.
2. Plug the adaptor into a convenient 120V AC/60Hz wall outlet.

BASIC OPERATION

Turn on the unit by pressing the Power ON/OFF button either on the main unit or on the remote control.

Function modes (iPod/AUX/radio) can be changed by pressing the Function selector on either the main unit or on the remote control.

The volume of the unit can be controlled by pressing the volume button either on the main unit or on the remote.

iPod CONTROL

4 different adaptors are included for docking your iPod. Select the suitable adaptor and fit it onto the unit. Your iPod can now be inserted into the iPod connector and docked securely.

1. Insert the iPod onto the connector.
 2. Turn on the unit and press the function selector to switch to iPod mode. The Power ON/OFF indicator and iPod indicator will light to show the unit is ready to play your iPod.
 3. Your iPod can be controlled by the iPod click wheel or using the included Remote control. Please refer to your iPod Instruction Manual for proper operation of your iPod.
 4. The volume can be adjusted by pressing the volume up/down buttons on the unit.
- To remove your iPod, simply stop the playback and gently unplug it from the docking connector.

Note:

- Your iPod can be charged after it is docked onto the unit. It automatically charges no matter if the main unit is switched On or OFF.
- The output volume is controlled by the unit setting and not by iPod volume level.

REMOTE OPERATION:

- PLAY/PAUSE button: Start/pause the music playback. Press and hold to stop your iPod and place it in sleep mode.
- REPEAT button: change the playback mode from Normal, Repeat One and Repeat All.
- SKIP buttons: Press to change to your favorite song. Press and hold to search the desired music period.
- MENU button: Press to show the main iPod Menu or to go back one level of your selection. Press and hold to wake your iPod or to return to the top Menu level.
- UP/DOWN buttons: To move up or down one level. The same actions as rotating the click wheel of the iPod.
- SELECT button: Selects or confirms a menu item on the iPod. Same as the center button on the iPod.

Note:

- To ensure the Infrared remote control works as expected, your iPod must have the proper or latest iPod software version installed.
- The remote control works even when the iPod is locked.
- To check your present iPod software version, select Settings > About > Version on your iPod. If an upgrade is needed, please visit Apple official website for latest updates.

LISTENING TO THE FM RADIO

1. Turn on the unit and press the function selector to switch to RADIO mode. The Power ON/OFF indicator and RADIO indicator will light to show the unit is in Radio mode.
2. FM stations can be auto scanned by pressing the Radio scan button. Press the button again to advance to the next station.
3. Once you reach the end of the FM band, press the reset button to restart the scanning from the beginning.

Note: To obtain the best FM radio reception, fully extend the FM antenna wire located on the back of the unit.

LISTENING TO A NON-DOCKING iPod OR OTHER DIGITAL AUDIO DEVICE

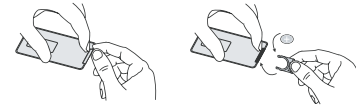
If you are using an iPod without a docking port or other MP3/digital audio player, you can still play it on the unit via the AUX IN jack.

1. Turn on the unit and press the function selector to switch to AUX mode. The Power ON/OFF indicator and AUX indicator will light to show the unit is in AUX mode.
2. Plug one end of the 3.5mm audio cable (included) into the headphone or Line out jack on your player. Plug the other end of the cable into the unit AUX IN jack located on the back of the unit.
3. Turn on the player.
4. Use the volume up/down buttons on the unit to adjust the main volume. You may need to adjust your player volume if it is connected via the headphone jack of your audio device.

REMOTE CONTROL

To use the remote control, please ensure the remote control battery CR2025 (included) is installed properly.

Replace the remote control battery when it stops working. It is highly recommended to use a good quality Lithium cell.



Note:

- The battery isolator paper must be removed prior to use.
- Room lighting and battery life can affect the operating range of the remote control.

CARE AND MAINTENANCE

- Do not subject the unit to excessive force, shock, dust or extreme temperature.
- Do not tamper the internal components of the unit.
- Clean the unit with a damp (never wet) cloth except metal contact or speaker grille. Solvent or detergent should never be used.
- Avoid leaving your unit in direct sunlight or in hot, humid or dusty places.
- Keep your unit away from heating appliances and sources of electrical noise such as fluorescent lamps or motors.
- Always keep your finger dry and clean before touching all the buttons.

NOTE: The unit is not magnetically shielded and may cause color distortion on the screen of some TVs or video monitors. To avoid this, you may need to move the unit further away from the TV or monitor if unnatural color shifts or image distortion occurs.

TROUBLESHOOTING GUIDE

SYMPTOM	POSSIBLE PROBLEM	SOLUTION
This unit does not respond (No power).	AC-DC adaptor is not plugged into a wall outlet or the connector is not plugged into the DC jack on the back of the unit.	Plug the AC adaptor into a wall outlet and plug the connector into the supply jack on the unit.
	Wall outlet is not functioning.	Plug another device into the same outlet to confirm the outlet is working.
iPod does not respond to the unit.	Using no / wrong iPod adaptor.	Make sure the dock adaptor is the proper fit for your iPod.
	iPod does not install properly.	Remove your iPod from the dock and check for any obstruction on the connector in the dock and on your iPod. Then reset it on the dock.
	Your iPod is locked up.	Please make sure that your iPod is working properly before docking into the unit. Please refer to your iPod manual for details or use the remote control.
iPod does not charge up.	iPod does not installed properly.	Remove your iPod from the dock and check for any obstruction on the connector in the dock and on your iPod. Then reset it on the dock.
	Problem with the iPod battery.	Please make sure that your iPod is working properly before docking into the unit. Please refer to your iPod manual for details.
External source (AUX) is not responding.	3.5mm headphone cable is not connected properly.	Check the connection and make sure the cable is inserted firmly into those jacks.
Sound is distorted.	Volume is set too high.	Decrease the volume of the unit to fit your preference.
	Sound source is distorted.	If you are using an external sound source like older generation of iPod, try reducing the output volume on the device itself. Also, try turning bass boost OFF or change EQ setting.
Radio interference.	Too close to a radio tower.	Move your speakers to see if the interference goes away. You may be able to purchase a shielded cable at your local electronics store.

TROUBLESHOOTING GUIDE

SYMPTOM	POSSIBLE PROBLEM	SOLUTION
Remote control is not functioning properly.	Low battery.	Replace the battery with correct type CR2025.
	The isolator paper was not removed.	Remove the isolator paper to activate the remote.

SPECIFICATIONS

Power Supply:

Input: AC 100-240V 50-60Hz
Output: DC 12V 1.5A (min.)

Output Power:

2 X 2.5W(RMS), 4ohm

Power Consumption:

22W

FM tuner:

88 - 108 MHz

Dimension:

295(L) x 98(W) x 122(H) mm
11.6(L)x3.9(W)x4.8(H)inch
1kg/2.21lbs

Net Weight:

"Made for iPod" means that an electronic accessory has been designed to connect specifically to iPod and has been certified by the developer to meet Apple performance standards. Apple is not responsible for the operation of this device or its compliance with safety and regulatory standards. iPod is a trademark of Apple Inc., registered in the U.S. and other countries.

SERVICE

Please refer to the instructions on the enclosed warranty card for returning your unit for service.

Distributed by:

Spectra Merchandising International, Inc.

Chicago Industry Tech Park
4230 North Normandy Avenue
Chicago, IL60634, U.S.A.

Please have model number ready, for Customer Service, call 1-800-777-5331.

Printed in China