

SPECTRA[®]

5-IN-1 WIRELESS HEADPHONES WITH
BUILT-IN FM RECEIVER



USER MANUAL
WH-500

PLEASE READ THIS USER MANUAL COMPLETELY BEFORE OPERATING
THIS UNIT AND RETAIN THIS BOOKLET FOR FUTURE REFERENCE

COMPLIANCE WITH FCC REGULATIONS

FCC ID: W7R820

This device complies with Part 15 of the FCC Rules. Operation is subject to the following two conditions:

- (1) this device may not cause harmful interference, and
- (2) this device must accept any interference received, including interference that may cause undesired operation.

This equipment has been tested and found to comply with the limits for a Class B digital device, pursuant to Part 15 of the FCC Rules. These limits are designed to provide reasonable protection against harmful interference in a residential installation. This equipment generates, uses and can radiate radio frequency energy and, if not installed and used in accordance with the instructions, may cause harmful interference to radio communications. However, there is no guarantee that interference will not occur in a particular installation. If this equipment does cause harmful interference to radio or television reception, which can be determined by turning the equipment off and on, the user is encouraged to try to correct the interference by one or more of the following measures:

- Reorient or relocate the receiving antenna.
- Increase the separation between the equipment and receiver.
- Connect the equipment into an outlet on a circuit different from that to which the receiver is connected.
- Consult the dealer or an experienced radio/TV technician for help.

CAUTION: Changes or modifications not expressly approved by the party responsible for compliance could void the user's authority to operate the equipment.

CONTENTS

Examine the package for the following items:

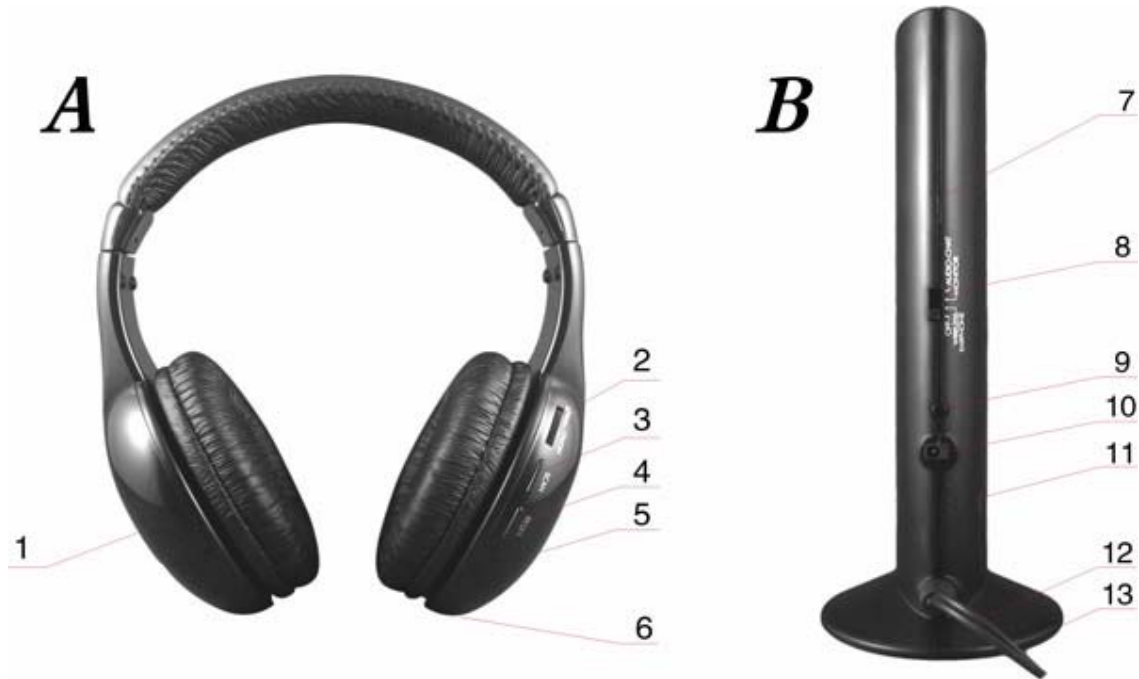
ITEM	QUANTITY
Base Station	1
Headphones (Receiver)	1
User Manual	1
Mic / Headphone Cable	1

FUNCTIONS AND CONTROLS

- A. HEADPHONES (RECEIVER)
 1. BATTERY COMPARTMENT COVER
 2. ON/OFF VOLUME CONTROL (VOL)
 3. SCAN BUTTON (SCAN)
 4. RESET BUTTON (RESET)
 5. POWER INDICATOR (RED LED)
 6. AUDIO PLUG JACK

- B. BASE STATION
 7. POWER INDICATOR (FRONT)
 8. POWER/FUNCTION SWITCH (TINY FREQUENCY MODULATION)
 9. EXTERNAL MICROPHONE JACK (MIC) -

10. DC INPUT JACK (DC4.5V 500mA)
11. BUILT-IN MICROPHONE (MIC)
12. BUILT-IN AUDIO INPUT CABLE
13. BATTERY COMPARTMENT (ON THE BOTTOM)



POWER SOURCES

THE HEADPHONES (RECEIVER)

1. Insert two 1.5V AAA (UM4) batteries (not included) into the battery compartment following the + and – polarity diagram.
2. Rotate the ON/OFF VOLUME CONTROL clockwise until a click sound is heard. The POWER INDICATOR on the Headphones will light RED when the unit is ON.
3. To turn the Headphones OFF, rotate the ON/OFF VOLUME CONTROL counterclockwise until a click sound is heard. The POWER INDICATOR on the Headphones will go off when the power is OFF.

THE BASE STATION

1. Insert two 1.5V AAA (UM4) batteries (not included) into the battery compartment according to the + and – polarity diagram on the BATTERY COMPARTMENT COVER or insert an external AC adaptor rated at DC4.5V 500mA (not included) with a center-positive DC plug into the DC JACK on the Base Station.
2. Slide the POWER/FUNCTION SWITCH to select the desired mode of operation.
Note: For best performance and longer range, it's recommended that the Base Station is placed at a high location, like on a shelf.

General Battery Care:

1. Use only the size and type of batteries specified.
2. For better performance and longer operating time, we recommend the use of alkaline-type batteries.
3. Do not mix old and new batteries.
4. Do not mix alkaline, standard (carbon-zinc) or rechargeable (nickel-cadmium) batteries.
5. If the unit is not to be used for an extended period of time, remove the batteries. Old or leaking batteries can cause damage to the unit.
6. Do not try to recharge batteries not intended to be recharged; they can overheat and rupture. (Follow battery manufacturer's directions).
7. Do not dispose of batteries in fire, batteries may leak or explode.

MODES OF OPERATION

WIRELESS HEADPHONES

1. Insert the audio input cable plug from the Base Station into the headphone jack or audio-out jack of an external audio source (such as PC, portable CD player, MP3 player etc.) with the 3.5mm Plug or Line Out socket of other desktop audio device such as TV set or DVD player with an RCA Plug as shown in Fig. 1 below.
2. Slide the FUNCTION SWITCH of the Base Station to the "Wireless Headphone" position. The POWER INDICATOR will light.
3. Turn on the HEADPHONES and set the volume level to a comfortable level.
4. Press the "RESET" and then the "SCAN" button to tune in the HEADPHONES.
5. If correctly tuned, the music from the external audio source will be heard on the Wireless Headphones.

Notes:

- ◆ Repeat step #4 if the BASE STATION and HEADPHONES do not successfully tune the first time due to external interferences.
- ◆ Avoid touching the unused metal part of plug that is not in use (3.5mm or RCA) with your finger, other metal objects. Grounding the unused plug to metal or touching the exposed plug could damage the Base Station.

WIRELESS AUDIO CHAT OVER THE INTERNET

1. Plug the Base Station audio input cable into the audio out jack of your PC.
2. Insert one end of the Mic/Headphones Cable (included) into the Microphone Jack (MIC) on the Base Station, and insert the other end into the MIC IN jack on your PC as shown in Fig. 2 below.
3. Slide the FUNCTION SWITCH on the Base Station to "Audio Chat". Position the Base Station, so the BUILT-IN MIC is facing you, so there is a separation distance of about 1.5 feet as shown in Fig. 3 below.
4. Turn on the Headphones and tune it to the Base Station using the steps above (Wireless Headphones mode).
5. Adjust the volume of the Headphones to a comfortable level.
6. Open your chat program (SKYPE, MSN or similar instant messaging software) and you can now chat with your friends wirelessly over the internet.

Note: Your computer must have an internet connection for wireless chat over the internet.

WIRELESS MONITORING

Place the Base Station in a location that you want to monitor (baby's room, an elder person's room, a pet's location or any other area that you will need to monitor).

1. Place the Base Station, so the BUILT-IN MIC is facing the area to be monitored.
2. Slide the FUNCTION SWITCH on the Base Station to "MONITOR".
3. Turn on the Headphones and tune it to the Base Station using the steps above (Wireless Headphones mode).

4. The audio from the area being monitored can now be heard in the Headphones.

Note: Place the Base Station on a flat level surface to prevent it from falling over during operation. Any sudden loud sound that occurs near the Base Station could cause an interruption in the connection. If this occurs, it will be necessary to retune the headphones to the Base Station as described in step #3 above.

LISTENING TO THE FM RADIO

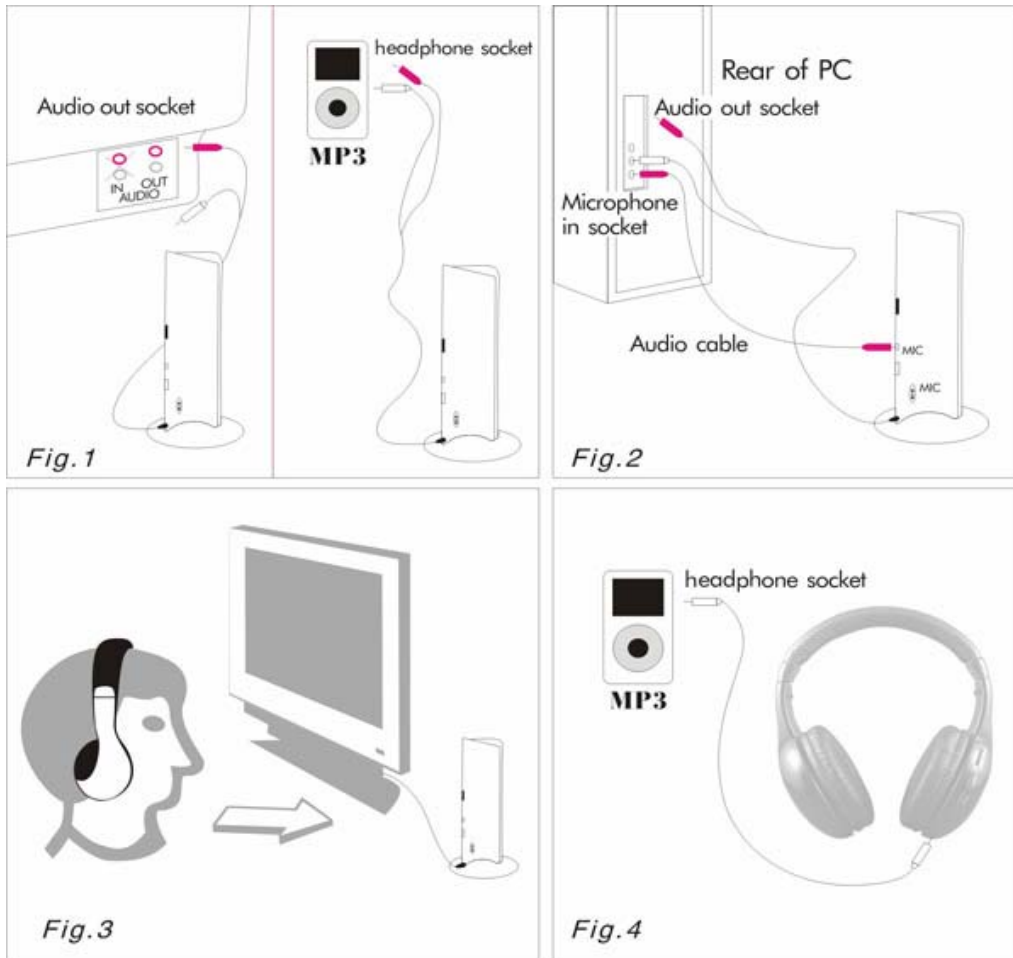
The Headphones can be used separately as a FM radio

1. Turn on the Receiver but do not turn on the Base Station.
2. Press the RESET and then the SCAN button to search and tune in the next available radio station. The scanning will start from the lower FM band and increase every time the SCAN Button is pressed.
3. Press the SCAN button repeatedly for other broadcasting radio stations in the upper FM band.
4. When the highest FM frequency is reached, it will be necessary to press the RESET button to return to the lowest FM station again. Press the SCAN button again, and the receiver will search for available radio channels starting with the lowest FM band.

WIRED HEADPHONES (BATTERIES NOT REQUIRED TO OPERATE)

1. Turn off the Headphones power if they are ON.
2. Insert one end of the Mic/Headphone Cable (included) into the AUDIO PLUG JACK on the Headphones as shown in Fig. 4 below.
3. Insert the other end of the cable into the headphone jack of an external audio source (such as a TV, PC, portable CD player, MP3 player etc.).
4. Music from the external audio source will be heard in the Wired Headphones.

Note: Volume of the Wired Headphones can only be adjusted by the volume control of the external audio device they are connected to.



TIPS ON USING THE PRODUCT

1. To achieve the best reception please spread out audio cable of the Base Station or locate the Base Station in a higher location. (The Base Station audio cable also works as a FM antenna).
2. If the sound is distorted or too strong, adjust the volume of the external audio source (TV set, DVD player, PC, MP3, walkman etc.) to a lower level and the reception performance may be improved.
3. Replace the batteries if you have the following problems:
 - ◆ POWER INDICATOR of the Base Station and/or Headphones becomes dim.
 - ◆ The Receiver reception is poor.
 - ◆ The volume becomes weak and the sound is distorted.
4. Turning off the power of both Headphones and Base Station when operating in the Wired Headphones mode as this mode does not require any battery power.
5. When not using the unit, turn off both the Base Station and Headphones to save battery power. Always remove all the batteries from the Base Station and Headphones when not using for a long time. Old and leaking batteries can cause permanent damage to your product.




At Spectra, environmental and social responsibility is a core value of our business. We are dedicated to continuous implementation of responsible initiatives with

an aim to conserve and maintain the environment through responsible recycling.
Please visit us at <http://www.spectraintl.com/green.htm> for more information on Spectra's green initiatives or to find a recycler in your area.

TECHNICAL SPECIFICATIONS

Base (Emitter) Station

Emission frequency : $86 \pm 0.5\text{MHz}$
Modulation mode : FM
Power supply : 2 x 1.5V AAA (UM4) batteries (not included) or
External AC Adaptor (not included) DC4.5V 500mA 

Receiver (Headphones)

Frequency range : 86MHz for Wireless Headphones
88 - 108MHz for FM Radio
Reception Mode : FM
Power Supply : 2 x 1.5V AAA (UM4) batteries (not included)

0713

Printed in China