

Studebaker

Stereo Turntable with Bluetooth Receiver and Record Storage Compartment

SB6059 OWNER'S MANUAL



Please read this Instruction Manual carefully before using
the unit and retain it for future reference

WARNING

TO PREVENT FIRE OR SHOCK HAZARD, DO NOT USE THIS PLUG WITH AN EXTENSION CORD, RECEPTACLE OR OTHER OUTLET UNLESS THE BLADES CAN BE FULLY INSERTED TO PREVENT BLADE EXPOSURE. TO PREVENT FIRE OR SHOCK HAZARD, DO NOT EXPOSE THIS APPLIANCE TO RAIN OR MOISTURE.



THE CAUTION MARKING AND RATING LABEL ARE LOCATED AT THE BACK OF THE UNIT

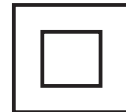
IMPORTANT SAFETY INSTRUCTIONS

1. Read these instructions.
2. Keep these instructions.
3. Heed all warnings.
4. Follow all instructions.
5. Do not use this apparatus near water.
6. Clean only with dry cloth.
7. Do not block any ventilation openings. Install in accordance with the manufacturer's instructions.
8. Do not install near any heat sources such as radiators, heat registers, stoves, or other apparatus (including amplifiers) that product heat.
9. Do not defeat the safety purpose of the polarized or grounding-type plug. A polarized plug has two blades with one wider than the other. A grounding type plug has two blades and a third grounding prong. The wide blade or the third prong is provided for your safety. If the provided plug does not fit into your outlet, consult an electrician for replacement of the obsolete outlet.
10. Protect the power cord from being walked on or pinched particularly at plugs, convenience receptacles, and the point where they exit from the apparatus.
11. Only use attachments/accessories specified by the manufacturer.
12. Use only with a cart, stand, tripod, bracket, or table recommended by the manufacturer, or sold with the product. When a cart is used, use caution when moving the cart/apparatus combination to avoid injury from tip-over.
13. Unplug this apparatus during lightning storms or when unused for a long periods of time.
14. Refer all servicing to qualified service personnel. Servicing is required when the apparatus has been damaged in any way, such as power-supply cord or plug is damaged, liquid has been spilled or objects have fallen into the apparatus, the apparatus has been exposed to rain or moisture, does not operate normally, or has been dropped.



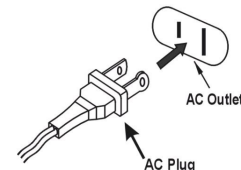
15. This appliance shall not be exposed to dripping or splashing water and that no object filled with liquids such as vases shall be placed on the apparatus.
16. Do not overload wall outlet. Use only power source as indicated.
17. Use replacement part as specified by the manufacturer.
18. Upon completion of any service or repairs to this product, ask the service technician to perform safety checks.
19. Power Sources - This product should be operated only from the type of power source indicated on the marking label. If you are not sure of the type of power supply to your home, consult your product dealer or local power company. For products intended to operate from battery power, or other sources, refer to the operating instruction.
20. Object and Liquid Entry - Never push objects of any kind into this product through openings as they may touch dangerous voltage points or short-out parts that could result in a fire or electric shock. Never spill liquid of any kind on the product.
21. Damage Requiring Service - Unplug this product from the wall outlet and refer servicing to qualified service personnel under the following conditions:
 - a) When the power-supply cord or plug is damaged,
 - b) If liquid has been spilled, or objects have fallen into the product,
 - c) If the product has been exposed to rain or water,
 - d) If the product does not operate normally by following the operating instructions. Adjust only those controls that are covered by the operating instructions as an improper adjustment of other controls may result in damage and will often require extensive work by a qualified technician to restore the product to its normal operation.
 - e) If the product has been dropped or damaged in any way, and
 - f) When the product exhibits a distinct change in performance - this indicates a need for service.
22. Mains plug is used as disconnect device and it should remain readily operable during intended use. In order to disconnect the apparatus from the mains completely, the mains plug should be disconnected from the mains socket outlet completely.
23. Excessive sound pressure from earphones and headphone can cause hearing loss.
24. Minimum distances of 10 cm around the apparatus for sufficient ventilation
25. The ventilation should not be impeded by covering the ventilation openings with items, such as newspapers, table-cloths, curtains, etc.
26. No naked flame sources, such as lighted candles, should be placed on the apparatus.
27. The use of apparatus in moderate climates.

This symbol indicates that this product incorporates double insulation between hazardous mains voltage and user accessible parts.



CAUTION

TO PREVENT ELECTRIC SHOCK, MATCH WIDE BLADE OF PLUG TO WIDE SLOT. FULLY INSERT THE PLUG TO MAIN POWER SOCKET.



SAVE THESE INSTRUCTIONS

IMPORTANT NOTES

Avoid installing the unit in locations described below:

- Places exposed to direct sunlight or close to heat radiating appliances such as electric heaters.
- Places subject to constant vibration.
- Dusty, humid or moist places.
- Unplug the unit from the electrical power outlet immediately in case of malfunction.

COMPLIANCE WITH FCC REGULATIONS

FCC ID : RQU-TT9913BT

This device complies with Part 15 of the FCC Rules. Operation is subject to the following two conditions:

- (1) this device may not cause harmful interference, and
- (2) this device must accept any interference received, including interference that may cause undesired operation.

NOTE : This equipment has been tested and found to comply with the limits for a Class B digital device, pursuant to Part 15 of the FCC Rules. These limits are designed to provide reasonable protection against harmful interference in a residential installation. This equipment generates, uses and can radiate radio frequency energy and, if not installed and used in accordance with the instructions, may cause harmful interference to radio communications. However, there is no guarantee that interference will not occur in a particular installation. If this equipment does cause harmful interference to radio or television reception, which can be determined by turning the equipment off and on, the user is encouraged to try to correct the interference by one or more of the following measures:

- Reorient or relocate the receiving antenna.
- Increase the separation between the equipment and receiver.
- Connect the equipment into an outlet on a circuit different from that to which the receiver is connected.
- Consult the dealer or an experienced radio/TV technician for help.

CAUTION: Changes or modifications not expressly approved by the party responsible for compliance could void the user's authority to operate the equipment.

PROTECT YOUR FURNITURE

This system is equipped with non-skid rubber 'feet' to prevent the product from moving when you operate the controls. These 'feet' are made from non-migrating rubber material specially formulated to avoid leaving any marks or stains on your furniture. However certain types of oil based furniture polishes, wood preservatives, or cleaning sprays may cause the rubber 'feet' to soften, and leave marks or a rubber residue on the furniture.

To prevent any damage to your furniture we strongly recommend that you purchase small self-adhesive felt pads, available at hardware stores and home improvement centers everywhere, and apply these pads to the bottom of the rubber 'feet' before you place the product on fine wooden furniture.

DEAR STUDEBAKER CUSTOMER

Selecting fine audio equipment such as the unit you've just purchased is only the start of your musical enjoyment. Now it's time to consider how you can maximize the fun and excitement your equipment offers. This manufacturer and the Electronic Industries Association's Consumer Electronics Group want you to get the most out of your equipment by playing it at a safe level. One that lets the sound come through loud and clear without annoying blaring or distortion and, most importantly, without affecting your sensitive hearing.

Sound can be deceiving. Over time your hearing "comfort level" adapts to higher volumes of sound. So what sounds "normal" can actually be loud and harmful to your hearing. Guard against this by setting your equipment at a safe level BEFORE your hearing adapts.

To establish a safe level:

- Start your volume control at a low setting.
- Slowly increase the sound until you can hear it comfortably and clearly, and without distortion.

Once you have established a comfortable sound level:

- Set the dial and leave it there.

Taking a minute to do this now will help to prevent hearing damage or loss in the future. After all, we want you listening for a lifetime.

We Want You Listening For a Lifetime

Used wisely, your new sound equipment will provide a lifetime of fun and enjoyment. Since hearing damage from loud noise is often undetectable until it is too late, this manufacturer and the Electronic Industries Association's Consumer Electronics Group recommend you avoid prolonged exposure to excessive noise.

Customer's Record:

The serial number of this product is found on its back cover. You should note the serial number of this unit in the space provided as a permanent record of your purchase to aid in identification in the event of theft or loss.

Model Number: SB6059

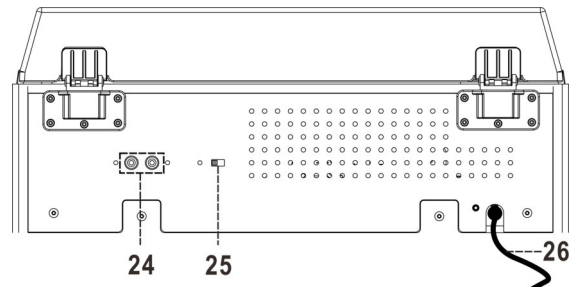
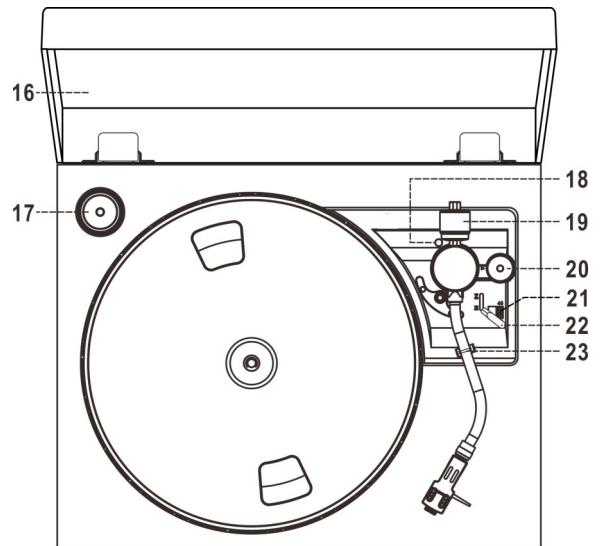
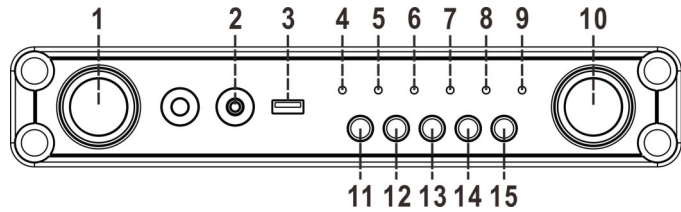
Serial Number: _____

ACCESSORIES INCLUDED

- | | | |
|--|-----------------|-----------------|
| - User Manual and Assembly Instruction | - Assembly Kit: | * Bottom Board |
| - Counter Weight | | * Back Board |
| - Cloth Mat | | * Metal Bracket |
| - RCA Cable | | * Screws |

LOCATION OF CONTROLS

1. POWER ON/OFF BUTTON / VOLUME CONTROL
2. AUX IN JACK
3. USB PORT
4. POWER LED INDICATOR
5. REPEAT/RANDOM LED INDICATOR
6. PLAY/PAUSE LED INDICATOR
7. USB MODE LED INDICATOR
8. BLUETOOTH LED INDICATOR
9. PHONO/AUX IN MODE LED INDICATOR
10. FUNCTION KNOB
11. PLAY MODE BUTTON
12. ◀◀ SKIP DOWN BUTTON
13. ▶▶ SKIP UP BUTTON
14. ■ STOP BUTTON
15. ▶|| PLAY/PAUSE BUTTON
16. DUST COVER
17. 45 RPM ADAPTER
18. AUTO RETURN ALIGNMENT SCREW
19. COUNTER WEIGHT
20. PITCH CONTROL
21. TURNTABLE SPEED SELECTOR
22. CUE LEVER
23. TONE ARM LOCK
24. RCA LINE OUT JACKS
25. BUILT-IN SPEAKER/LINE OUT SELECTOR
26. AC POWER CORD



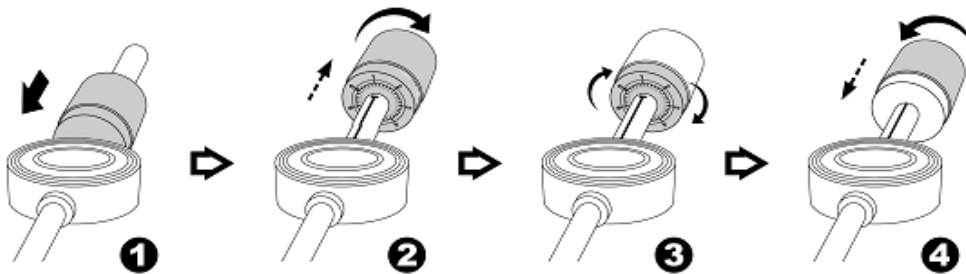
PRECAUTIONS FOR USE

Installation

- Unpack all parts and remove protective material.
- Follow the attached "Assembly Instruction" to assemble the unit.
- Do not connect the unit to the mains before checking the mains voltage and before all other connections have been made.
- Do not cover any vents and make sure that there is a space of several inches around the unit for ventilation.

INSTALLATION OF THE COUNTER WEIGHT

1. Slide the COUNTER WEIGHT (#19) onto the back of the tone arm, and push it forward until it reaches the pivoting hub of the tone arm as shown in figure 1 below.
2. Rotate the COUNTER WEIGHT (#19) clockwise and it will begin to move away from the pivoting hub. Keep rotating the COUNTER WEIGHT (#19) until it reaches the white line on the tone arm scale as show below in figure 2. Line up the "0" on the COUNTER WEIGHT (#19) scale, so it's lined up with the white line.
3. Slowly rotate the COUNTER WEIGHT (#19) counter-clockwise and it will begin to move in towards the pivoting hub of the tone arm. The numbers shown on the COUNTER WEIGHT (#19) will increase. This increases the weight applied to the stylus needle when playing a record.
4. Adjust the COUNTER WEIGHT (#19) for the desired tracking force applied to the stylus needle so the needle does not skip while playing a record.



NOTE : Each number on the tone arm COUNTER WEIGHT (#19) scale represents the working pressure applied to the stylus needle. This is normally set between 4 and 6 grams depending on the stylus used, and according to the cartridge manufacturer.

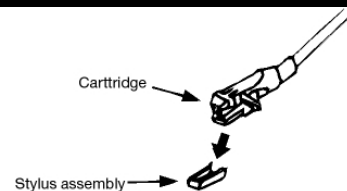
CONNECTION

1. Unwind the AC POWER CORD (#26) fully and connect it to any convenient household 120V~ 60Hz AC outlet.
2. Press the POWER ON/OFF BUTTON (#1) once to turn on the unit.
3. Set the BUILT-IN SPEAKER /LINE OUT selector to BUILT-IN SPEAKER.
4. Please refer to the Operations section of this Manual for details.

PHONO

A) Operation

- Remove the stylus protector.
 - Untie the cable holding the tone arm in place, and make sure it's removed from the tone arm rest before operating the unit.
 -
1. Press the POWER ON/OFF BUTTON (#1) once to turn on the unit.
 2. Rotate the FUNCTION KNOB (#10) clockwise until the PHONO/AUX IN MODE LED INDICATOR (#9) is lighted up in RED color.
 3. Raise the DUST COVER (#16)
 4. Set the TURNTABLE SPEED SELECTOR (#21) to the proper position for the record you are playing.
 5. Place the record on the platter [use the 45 RPM ADAPTER (#17) if necessary].



6. You can manually raise the tone arm or you can use the CUE LEVER (#22) to lift up the tone arm.
7. The platter will start to rotate. Position the tone arm over the desired track on the record to start the playback.
8. At the end of record, the tone arm will return to the rest position automatically.
9. To stop the record manually, lift the tone arm from the record or use the CUE LEVER (#22) and return it to the rest position.

● **Play suspension**

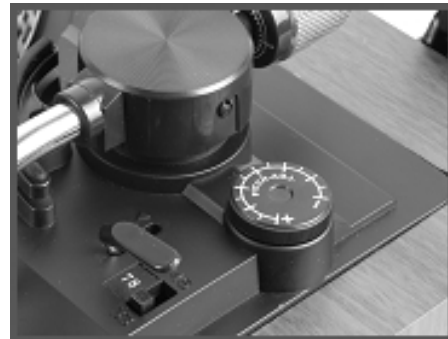
Press the CUE LEVER (#22) so it's in the UP position. The tone arm will lift up and then stop playback temporarily.

Remark :

- The tone arm may automatically return to the rest position the first time you use the unit. This is not a malfunction. The unit will reset and operate properly the next time used.
- This unit is not compatible with magnetic cartridges. If you change the cartridge and stylus to a magnetic type, you will no longer be able to use this unit via the Aux-in on your music system.
- Certain records may have the end of the record located before the auto return detection area. The tone arm may not automatically return to the rest position. To stop the record manually, lift the tone arm from the record or use the CUE LEVER (#22) and return it to the rest position

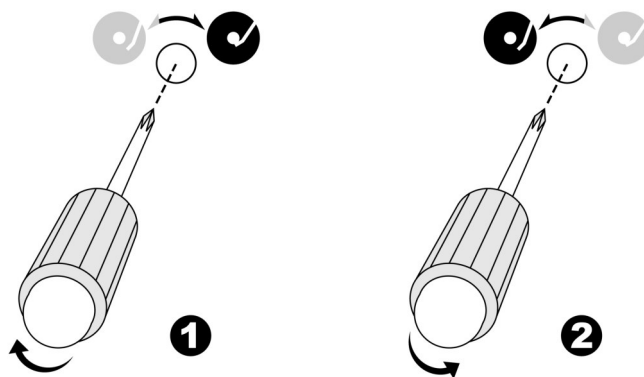
B) Pitch Adjust

The PITCH CONTROL (#20) allows you to fine tune the playing speed of the record once the correct speed (33/45/78 RPM) is chosen. Turn the Pitch Adjust Control to slightly increase or decrease the speed of the turntable if necessary.



C) Tone arm auto return alignment

The position of the tone arm to complete playback and return to the rest position can be adjusted by the AUTO RETURN ALIGNMENT SCREW (#18) as follow:-



Before starting the alignment, please take out the hole covering rubber:-

a) If the system cannot complete the playback of record and return earlier, use a Phillips head screw driver to turn the AUTO RETURN ALIGNMENT SCREW (#18) inside the hole clockwise. The stop and eject position of the tone arm will move inward to the center of the record for playback completion.

b) If the system cannot return to rest position automatically after playback of record use a Phillips head screw driver to turn the AUTO RETURN ALIGNMENT SCREW (#18) inside the hole counter-clockwise. The stop and eject position of the tone arm will move away from the center of the record for playback completion.

Remark:-

- The stopping position is very subjective among difference customers. Please select the most suitable position based on your own record collection. The ex-factory setting is based on the most common template.
- Please check the stopping position from time to time during adjustment and avoid over turning of the screw inside.

USB OPERATION

The system is able to decode and playback all MP3 files which are stored in the memory media via a USB connecting port.

● **USB PLAY / PAUSE ►|| mode**

1. Press the POWER ON/OFF BUTTON (#1) once to turn on the unit.
2. Rotate the FUNCTION KNOB (#10) clockwise until the USB MODE LED INDICATOR (#7) lights up in RED color.
3. Insert a USB drive into the USB PORT (#3) and the unit will start playback automatically and the PLAY/PAUSE LED INDICATOR (#6) will light up.
4. During USB play mode, press PLAY/PAUSE ►|| BUTTON (#15) once to pause the playback and the PLAY/PAUSE LED INDICATOR (#6) will blink.

● **STOP MODE**

1. If the STOP ■ BUTTON (#14) is pressed during PLAY or PAUSE, the system will go into stop mode and the PLAY/PAUSE LED INDICATOR (#6) will be turned off.

● **SKIP MODE (SKIP UP ►►/SKIP DOWN ◄◄)**

1. During PLAY mode, if the SKIP UP ►► BUTTON (#13) is pressed, the player will go to next track.
2. During PLAY mode, if the SKIP DOWN ◄◄ BUTTON (#12) pressed, the player will go to the previous track.

● **PLAY MODE**

Press the PLAY MODE BUTTON (#11) during playback, a single track or all tracks can be played in different modes as follows:

Action	Play mode	Status of the Repeat/Random LED indicator (#5)
Press once	Repeat 1 track	Red LED - flashing
Press 2 nd time	Repeat All tracks	Red LED - lights up
Press 3th time	Random play	Green LED - lights up
Press 4th time	Off mode	No LED

Remarks

- The system will read all the individual tracks from the oldest one stored in the USB drive up to the latest one. After finishing all individual tracks, it will go to play the folder based on the time sequence which is the time of access.
- USB port does not support connection with a USB extension cable and is not designed to communicate with computer directly.
- The system can detect and read the file under MP3 format only through the USB port.
- If connect the system to MP3 player via the USB PORT, due to variances in MP3 encoding format, some MP3 player may not be able to play via the USB PORT. This is not a malfunction of the system.

MP3 track format requirement:-

- MP3 bit rate : 32 KBPS~256 KBPS.

BLUETOOTH OPERATION

Pairing a Bluetooth enabled device with the SB6059.

1. Press the POWER ON/OFF BUTTON (#1) once to turn on the unit.
2. Rotate the FUNCTION KNOB (#10) clockwise until the BLUETOOTH LED INDICATOR (#8) lights up in BLUE color and flashing
3. Turn on the Bluetooth function of the device you want to link to and enable the search or scan function to find the SB6059.
4. Select "SB6059" from the device list when it appears on your device screen. If required, enter the pass code "0000" to pair (link) SB6059 with your device.
5. If you are pairing (linking) your computer to the speaker using Bluetooth, you may need to set the SB6059 as your computer's default sound device.
6. After successfully pairing the SB6059 with your Bluetooth device, The BLUETOOTH LED INDICATOR (#8) will stop flashing and remain lit.
7. If you want to pair (link) the SB6059 with another Bluetooth device, press and hold PLAY/PAUSE ►|| BUTTON (#15) for a few seconds. The BLUETOOTH LED INDICATOR (#8) will flash. The SB6059 will go into Pairing/Discoverable mode. Repeat steps 3 & 4.

Now you can play music from your Bluetooth device wirelessly to the SB6059.

1. Select your favorite song, press the Play/Pause on your Bluetooth device or the PLAY/PAUSE ►|| BUTTON (#15) on the SB6059 to play or pause the song from your Bluetooth device.
2. Press the SKIP UP BUTTON ►►| (#13) or SKIP DOWN BUTTON |◄◄ (#12) to select the Next or Previous track.
3. Slowly adjust both the volume control of your SB6059 and your Bluetooth device until you reach a comfortable listening level.

Notes :

1. Refer to the manual of your cell phone, tablet PC, computer or other Bluetooth enabled devices for Bluetooth operation since it may vary from model to model.
2. If your Bluetooth enabled device does not support A2DP profile, it will not play the music through the speaker, even if paired (linked).
3. Remember to turn off the SB6059 when you have finished listening,
4. Don't forget to switch off the power of your Bluetooth device as well.
5. The music playback will automatically be paused when you have an incoming call. When the call is ended, the SB6059 will start playing again.
6. The PLAY MODE BUTTON (#11) and STOP ■ BUTTON (#14) do not apply to Bluetooth operation.

AUX IN OPERATION

You can attach other music sources (iPod, MP3 or other digital audio players) through the AUX IN JACK (#2) to your external player's audio out jack or headphone jack.

1. Use an audio cable (not included) with one 3.5 mm stereo plug on each end of the cable.
2. Plug one end into the AUX IN JACK (#2) on the unit and the other end of the cable into the Line-out Jack or Headphone Jack of your external audio device.
3. Press the POWER ON/OFF BUTTON (#1) once to turn on the UNIT.
4. Rotate the FUNCTION KNOB (#10) clockwise until the PHONO/AUX IN MODE LED INDICATOR (#9) lights up in GREEN color.
5. Start playing the device you plugged into the AUX IN JACK (#2).
6. Slowly adjust both VOLUME CONTROL (#1) and the external device until you reach a comfortable listening level.

Notes:

- (1). If the line out jack of your external device is connected, then you only need to adjust the volume control of your home music system. If the Headphone Jack of your external device is connected, then you may need to adjust both the volume control of your external device and the volume control of the connected Hi Fi system to find the most desirable volume setting.
- (2). If the PHONO/AUX IN MODE LED INDICATOR (#9) lights up in RED color, it's in Phono mode but not AUX-IN mode. Rotate the FUNCTION KNOB (#10) clockwise again until GREEN LED is on.
- (3). Press the POWER ON/OFF BUTTON (#1) to turn off the UNIT when you finish listening. Don't forget to switch off the power on the connected Hi Fi system and your external device as well.

LINE OUT CONNECTION

You can connect this unit to an external Hi-Fi / AMPLIFIER system by connecting the LINE OUT RCA Jacks to the auxiliary input jacks on your Hi-Fi / AMPLIFIER system with RCA cables.

Notes:

- The Volume control on the main unit will adjust the volume when using the LINE OUT.
- Slide the BUILT-IN SPEAKER/LINE OUT SELECTOR (#25) to "LINE OUT" position, the internal speakers will be disabled.

CARE AND MAINTENANCE

1. Avoid operating your unit under direct sunlight or in hot, humid or dusty places.
2. Keep your unit away from heating appliances and sources of electrical noise such as fluorescent lamps or motors.
3. Unplug the unit from the electrical power outlet immediately in case of malfunction.

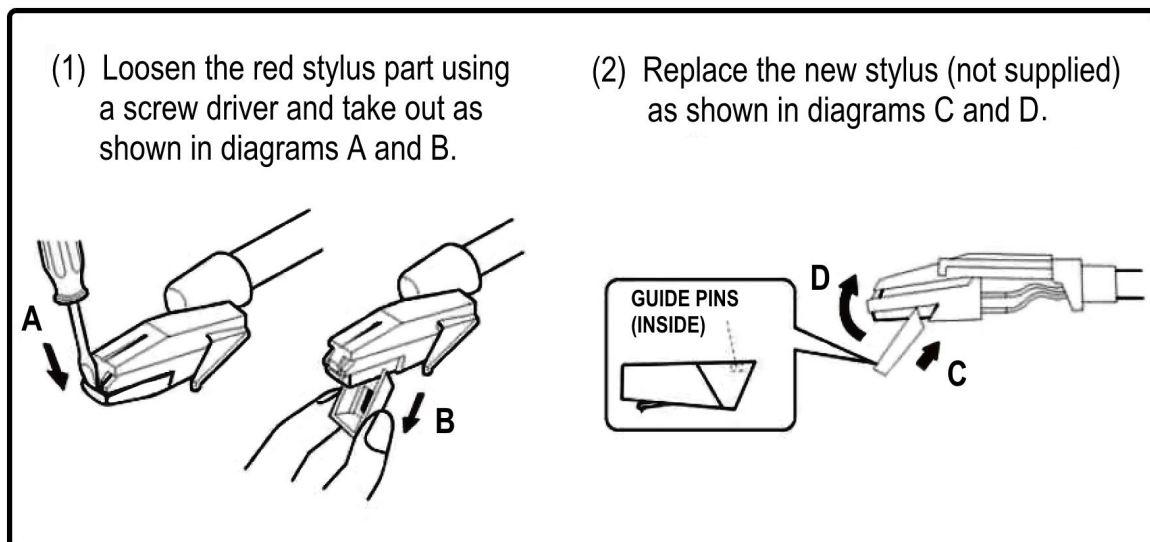
CLEANING THE UNIT

- To prevent fire or shock hazard, disconnect your unit from the AC power source when cleaning.
- The finish on the unit may be cleaned with a dust cloth and cared for same as other furniture. Use caution when cleaning and wiping the plastic parts.
- If the cabinet becomes dusty wipe it with a soft dry dust cloth. Do not use any wax or polish sprays on the cabinet.
- If the front panel becomes dirty or smudged with fingerprints it may be cleaned with a soft cloth slightly dampened with a mild soap and water solution. Never use abrasive cloths or polishes as these will damage the finish of your unit.

CAUTION: Never allow any water or other liquids to get inside the unit while cleaning.

STYLUS REPLACEMENT

PLEASE REFER TO THE DIAGRAM BELOW TO REPLACE THE STYLUS.
NO ADDITIONAL STYLUS IS SUPPLIED WITH THE SYSTEM.

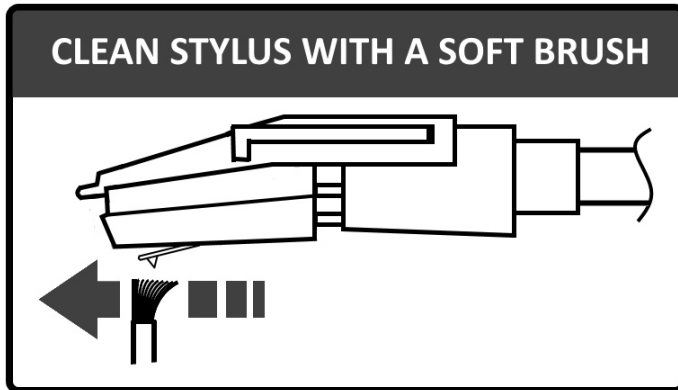


RECORD CARE AND MAINTENANCE

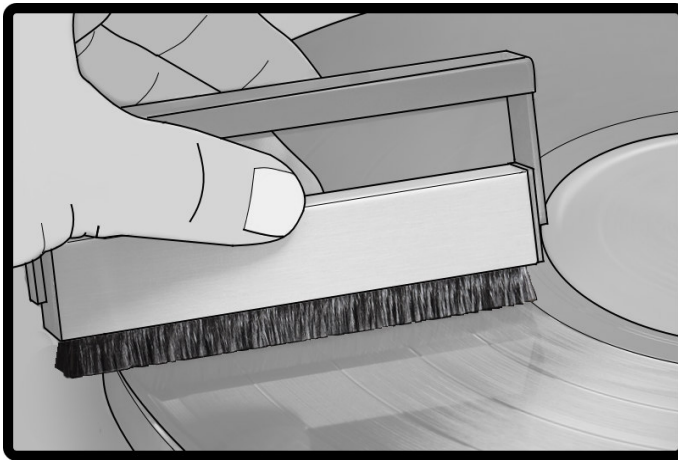
To ensure the best sound and the least amount of wear on your records, it's essential that they are kept clean. Make sure your records, especially older ones are sufficiently cleaned prior to playing them.

Thoroughly clean dust off the stylus and record regularly.

- Use a soft brush to clean the stylus. Brush from the base to the tip as shown below.



- For records with only light amounts of dust, we recommend brushing them off with a carbon fiber brush or velvet pad before playing them. Use a good quality record cleaner and brush set to keep your records clean. Carbon fiber brushes, velvet pads and record cleaning kits are available online or in local record stores.



- Using a mild dish soap and warm water for washing your records will also help remove excess dirt and dust that builds up over the years. Use a microfiber cloth when washing and wiping off any excess water from the record once they have been cleaned

NOTE:

Remember, the best cleaning in the world just removes all the dust and dirt. Some records will have scratches and groove wear. No amount of cleaning will fix this. So after cleaning, some records may sound "perfect" and others may not.

TROUBLESHOOTING GUIDE

SHOULD YOU EXPERIENCE DIFFICULTIES IN THE USE OF THIS PLAYER PLEASE REFER TO THE FOLLOWING CHART OR CALL 1-800-777-5331 FOR CUSTOMER SERVICE.

PROBLEM	POSSIBLE CAUSE	SOLUTION
The unit does not respond (no power).	AC power cord is not plugged into a wall outlet	Plug the AC power cord into a wall outlet.
	Wall outlet is not functioning.	Plug another device into the same outlet to confirm the outlet is working.
	POWER Switch in the OFF position	Press the POWER ON/OFF switch to the ON position
Unit is ON but there is low or no volume	Unit is not connected to external Hi-Fi/Amplifier	Connect the external Hi-Fi/Amplifier
	The Built-in speaker /Line out switch is selected at "line out" position	Slide the Built-in speaker/line out switch
Sound is distorted.	Volume level is set too high	Decrease the volume
Bluetooth no connection	Connection error	<p>Try to disconnect the Bluetooth device and re-connect with the below procedures:</p> <p>Press and hold PLAY/PAUSE ► BUTTON (#15) for a few seconds. The BLUETOOTH LED INDICATOR (#8) will flash. The SB6059 will go into Pairing/Discoverable mode.</p> <p>Turn on the Bluetooth function of the device you want to link to and enable the search or scan function to find the SB6059.</p> <p>Select "SB6059" from the device list when it appears on your device screen. If required, enter the pass code "0000" to pair (link) SB6059 with your device.</p>

90 DAY LIMITED WARRANTY AND SERVICE VALID IN THE U.S.A ONLY

SPECTRA MERCHANDISING INTERNATIONAL, INC. warrants this unit to be free from defective materials or factory workmanship for a period of 90 days from the date of original customer purchase and provided the product is utilized within the U.S.A. This warranty is not assignable or transferable. Our obligation under this warranty is the repair or replacement of the defective unit or any part thereof, except batteries, when it is returned to the SPECTRA Service Department, accompanied by proof of the date of original consumer purchase, such as a duplicate copy of a sales receipt.

You must pay all shipping charges required to ship the product to SPECTRA for warranty service. If the product is repaired or replaced under warranty, the return charges will be at SPECTRA's expense. There are no other express warranties other than those stated herein.

This warranty is valid only in accordance with the conditions set forth below:

1. The warranty applies to the SPECTRA product only while:
 - a. It remains in the possession of the original purchaser and proof of purchase is demonstrated
 - b. It has not been subjected to accident, misuse, abuse, improper service, usage outside the descriptions and warnings covered within the owner's manual or non-SPECTRA approved modifications
 - c. Claims are made within the warranty period
2. This warranty does not cover damage or equipment failure caused by electrical wiring not in compliance with electrical codes or SPECTRA owner's manual specifications, or failure to provide reasonable care and necessary maintenance as outlined in the owner's manual.
3. Warranty of all SPECTRA products applies to residential use only and is void when products are used in a nonresidential environment or installed outside the United States.

This warranty gives you specific legal rights, and you may also have other rights which vary from state to state. TO OBTAIN SERVICE please remove all batteries (if any) and pack the unit carefully and send it freight prepaid to SPECTRA at the address shown below. IF THE UNIT IS RETURNED WITHIN THE WARRANTY PERIOD shown above, please include a proof of purchase (dated cash register receipt) so that we may establish your eligibility for warranty service and repair of the unit without cost. Also include a note with a description explaining how the unit is defective. A customer service representative may need to contact you regarding the status of your repair, so please include your name, address, phone number and email address to speed the process.

IF THE UNIT IS OUTSIDE THE WARRANTY PERIOD, please include a check for **\$50.00** to cover the cost of repair, handling and return postage. All out of warranty returns must be sent prepaid.

It is recommended that you contact SPECTRA first at 1-800-777-5331 or by email at custserv@spectraintl.com for updated information on the unit requiring service. In some cases the model you have may be discontinued, and SPECTRA reserves the right to offer alternative options for repair or replacement.

SPECTRA MERCHANDISING INTERNATIONAL, INC.
4230 North Normandy Avenue,
Chicago, IL 60634, USA.
1-800-777-5331

To register your product, visit the link below to enter your information.

<http://www.spectraintl.com/wform.htm>